

Your Greatest Commercial Property Asset



SEAGATE

DEVELOPMENT GROUP

Concept to Creation... Experience Excellence



OVER ONE MILLION SQUARE FEET UNDER MANAGEMENT IN SOUTHWEST FLORIDA

SW MANAGEMENT
& REALTY

A Seagate Development Group Company



Commercial & Residential
Development & Construction



Maintenance Services



Property Management



Leasing Services

CGC1523216

12801 COMMONWEALTH DRIVE, SUITE 12, FT. MYERS, FL 33913 | (239) 738-7900 | SEAGATEDEVELOPMENTGROUP.COM

SW MANAGEMENT & REALTY

A Seagate Development Group Company

WESTLINKS XIV
13100 WESTLINKS TERRACE | FORT MYERS, FLORIDA



FOR LEASING INFORMATION CONTACT

MATT PRICE (239) 738-7884 | mprice@seagatedevelopmentgroup.com

Broker Participation Encouraged

PROPERTY HIGHLIGHTS



One-Story, 25,600 Square
Foot Office Building



Approved for Office and
Showroom Uses



Daniels Parkway Exposure



Underground Utilities



Individual Office Entrances
and Sidewalks



Professionally Landscaped and
Maintained Grounds



Broker Participation
Encouraged

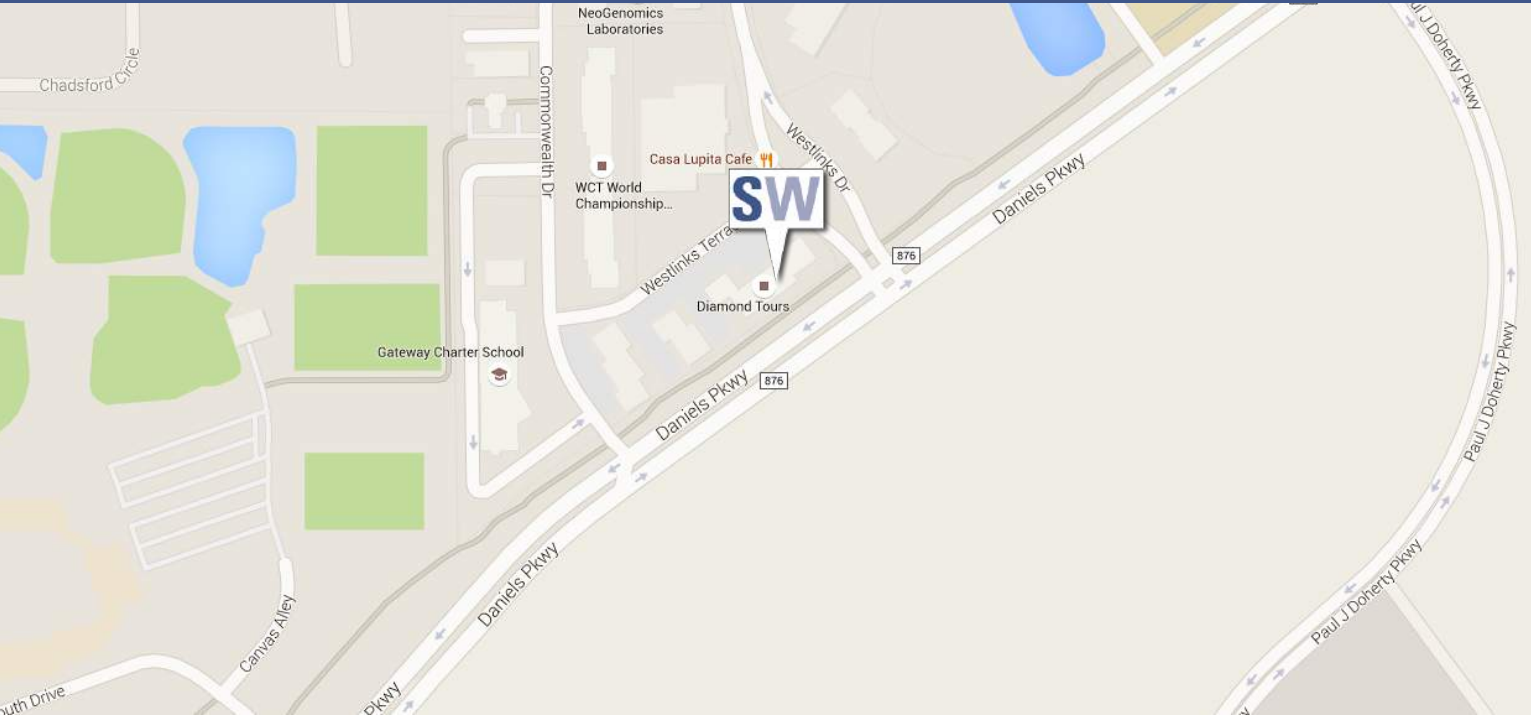


Full-service Design and
Construction with a Generous
Build-Out Allowance

SW MANAGEMENT & REALTY

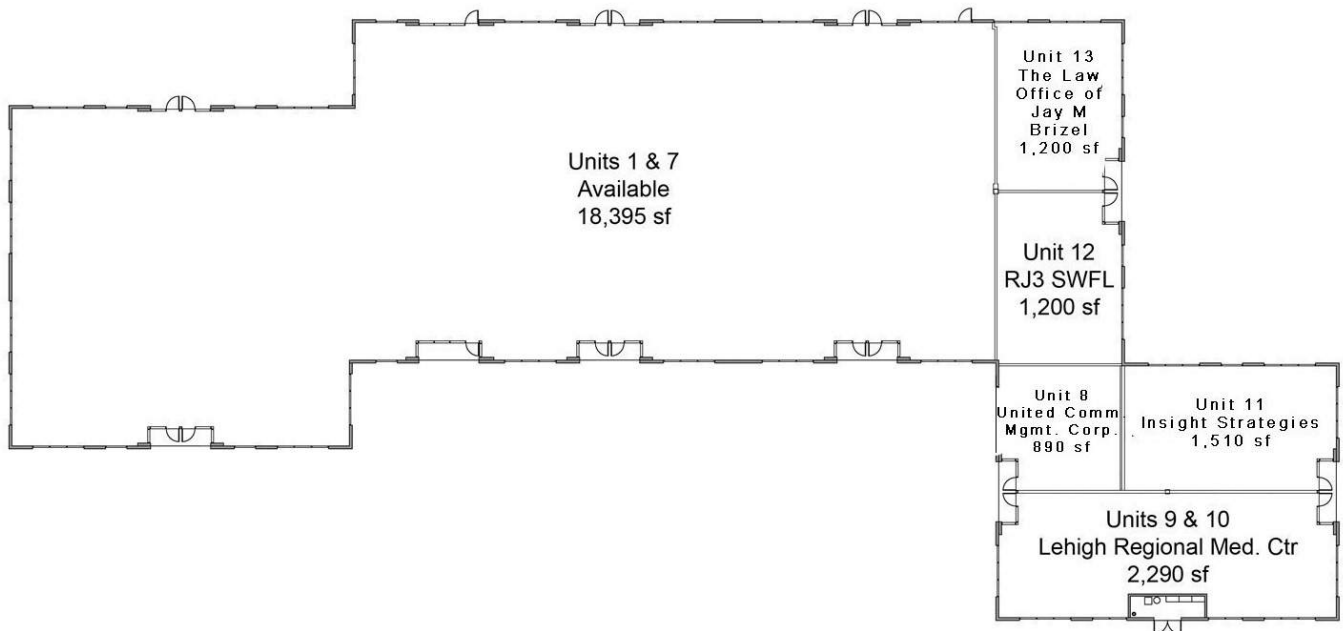
A Seagate Development Group Company

WESTLINKS XIV 13100 WESTLINKS TERRACE | FORT MYERS, FLORIDA



Westlinks XIV is located within Westlinks Business Park, a fourteen-building office and flex park. Located off of Daniels Parkway in Fort Myers. Westlinks is also located within Gateway, a 3,000-acre master-planned community, and within minutes to I-75, U.S. 41 and Southwest Florida International Airport.

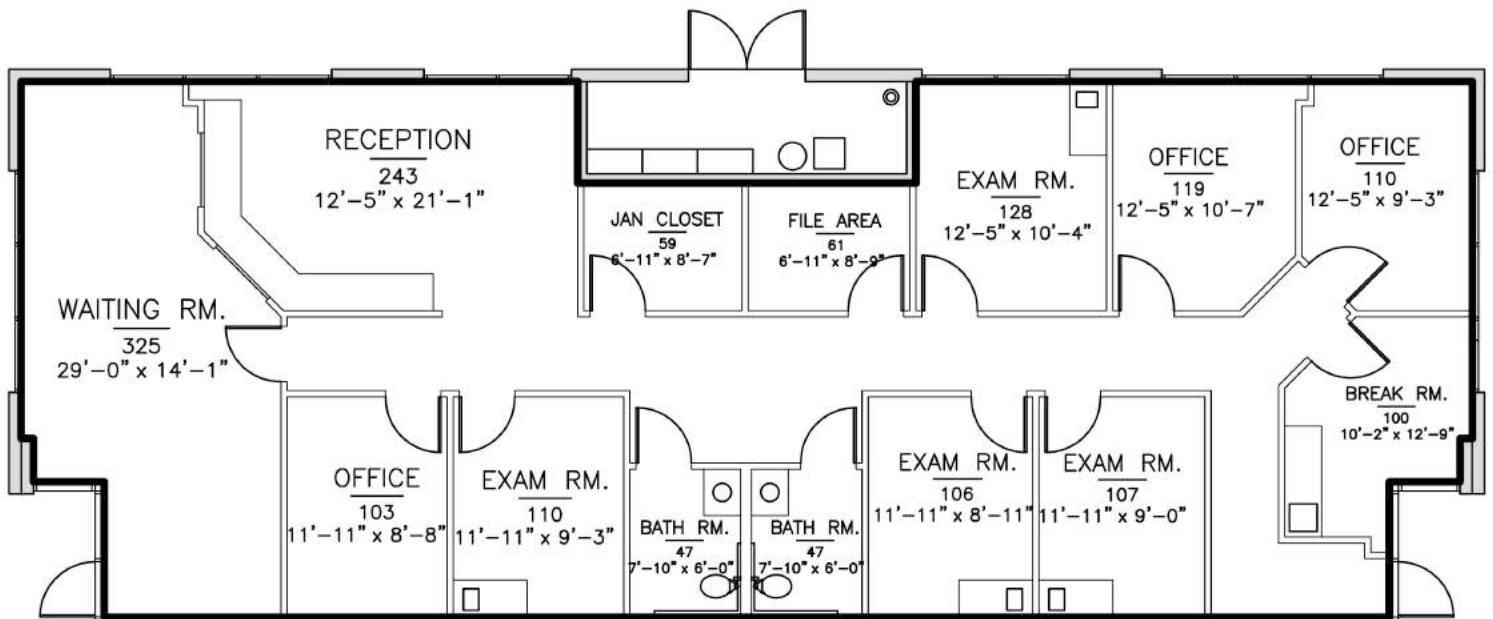
FLOOR PLAN | WESTLINKS XIV



SW MANAGEMENT & REALTY

A Seagate Development Group Company

FLOOR PLAN | WESTLINKS XIV



Westlinks XIV - Units 9 & 10
2,290 Sq. Ft.