

Your Greatest Commercial Property Asset



**SEAGATE**

DEVELOPMENT GROUP

Concept to Creation... Experience Excellence



OVER ONE MILLION SQUARE FEET UNDER MANAGEMENT IN SOUTHWEST FLORIDA

**SW** MANAGEMENT  
& REALTY

A Seagate Development Group Company



Commercial & Residential  
Development & Construction



Maintenance Services



Property Management



Leasing Services

CGC1523216

12801 COMMONWEALTH DRIVE, SUITE 12, FT. MYERS, FL 33913 | (239) 738-7900 | SEAGATEDEVELOPMENTGROUP.COM

# SW MANAGEMENT & REALTY

A Seagate Development Group Company

## EASTLINKS IV 12550 PROFESSIONAL PARK DR. | FORT MYERS, FLORIDA











FOR LEASING INFORMATION CONTACT

MATT PRICE (239) 738-7884 | [mprice@seagatedevelopmentgroup.com](mailto:mprice@seagatedevelopmentgroup.com)

Broker Participation Encouraged

### PROPERTY HIGHLIGHTS

-  Two 29,925 SF Office Buildings Separated by a Courtyard with Park-Like Landscaping
-  Ample Parking with Curbs
-  In close proximity to I-75 & SWFL International Airport
-  Seven Building, Office & Flex Park located at the Intersection of Daniels Parkway and Gateway Blvd
-  Suites from 1,300 square feet with Individual Entrances
-  Underground Utilities
-  Professionally Landscaped and Maintained Grounds
-  Full Service Design and Construction with Generous Build-Out Allowance

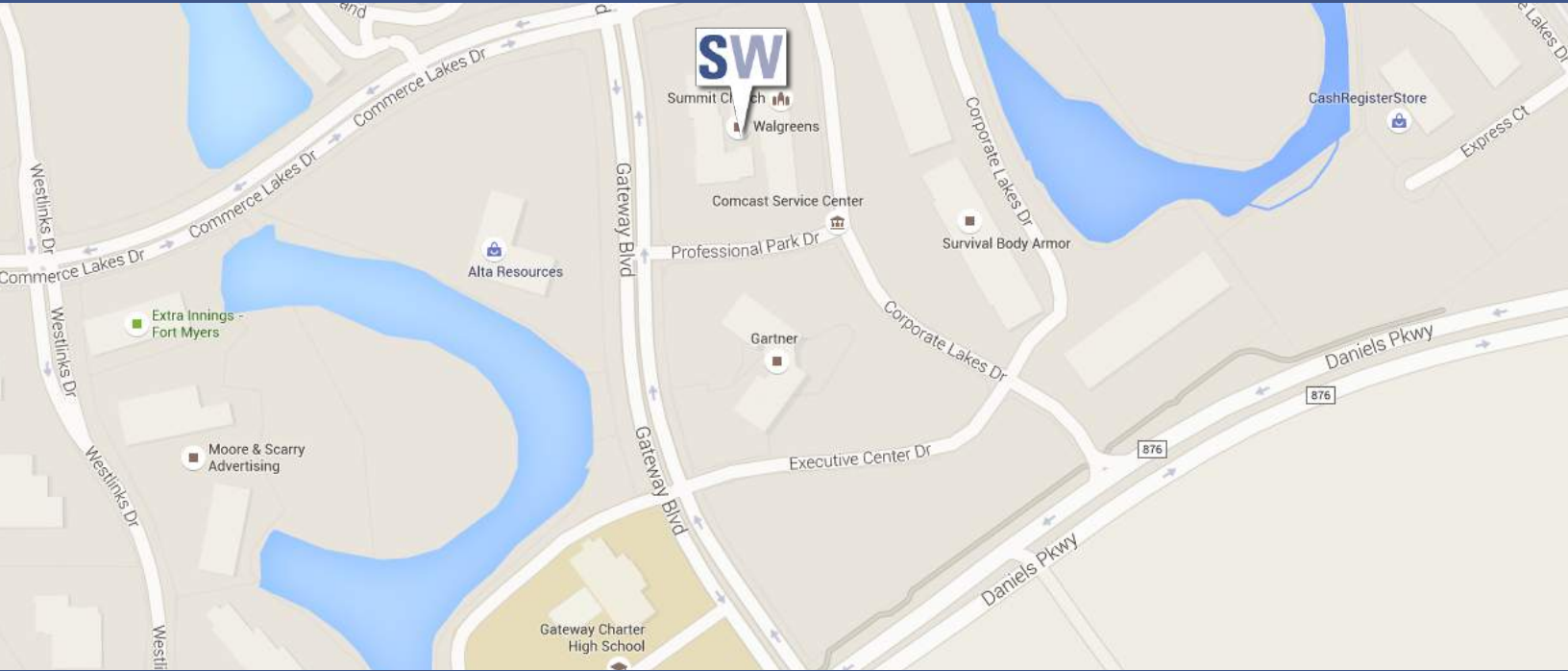


# SW MANAGEMENT & REALTY

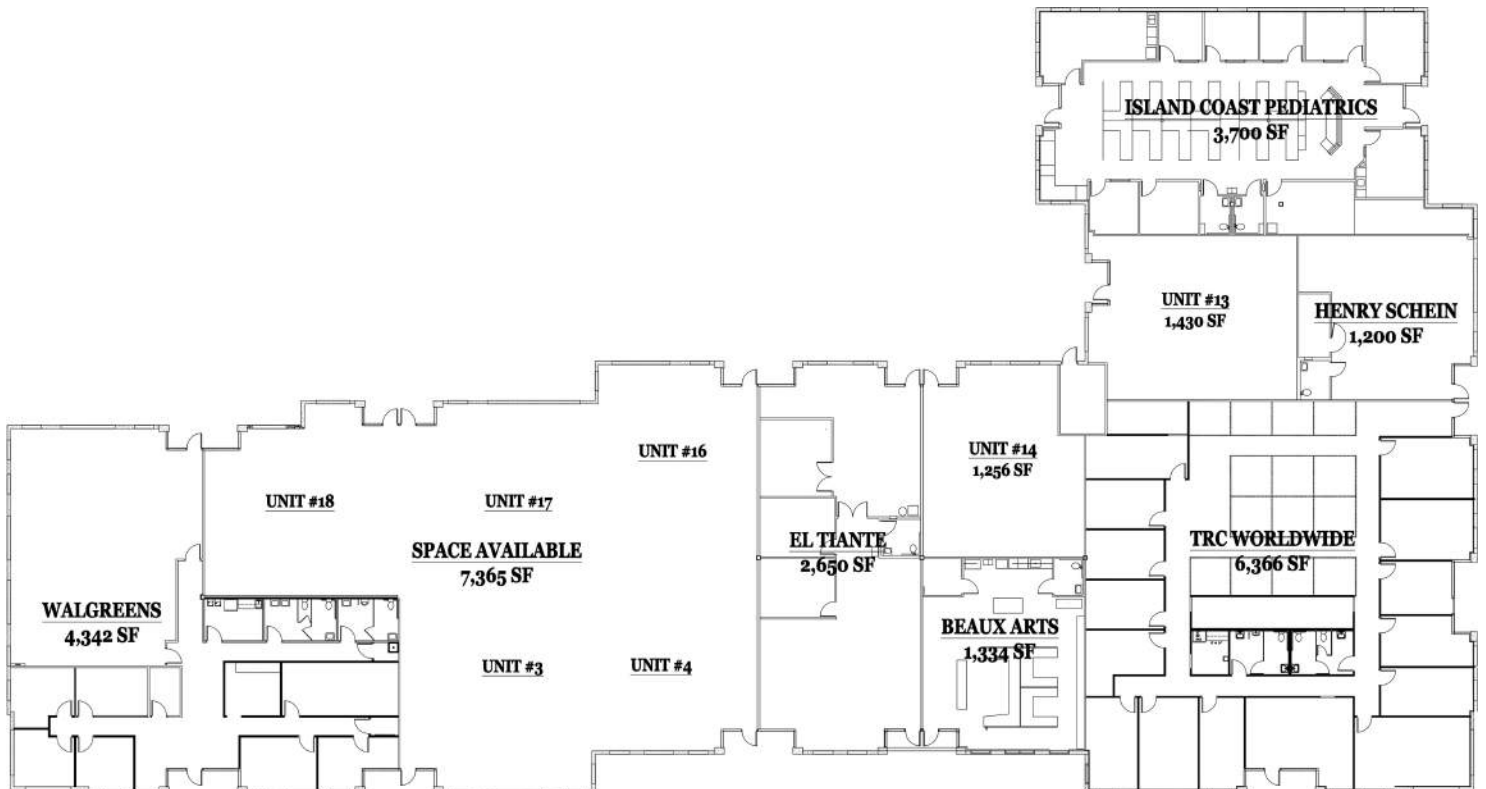
A Seagate Development Group Company

## EASTLINKS IV

12550 PROFESSIONAL PARK DR. | FORT MYERS, FLORIDA



## FLOOR PLAN | EASTLINKS IV-A



# SW MANAGEMENT & REALTY

A Seagate Development Group Company

## FLOOR PLAN | EASTLINKS IV-B

