

Your Greatest Commercial Property Asset



SEAGATE

DEVELOPMENT GROUP

Concept to Creation... Experience Excellence



OVER ONE MILLION SQUARE FEET UNDER MANAGEMENT IN SOUTHWEST FLORIDA

SW MANAGEMENT
& REALTY

A Seagate Development Group Company



Commercial & Residential
Development & Construction



Maintenance Services



Property Management



Leasing Services

CGC1523216

12801 COMMONWEALTH DRIVE, SUITE 12, FT. MYERS, FL 33913 | (239) 738-7900 | SEAGATEDEVELOPMENTGROUP.COM

SW MANAGEMENT & REALTY

A Seagate Development Group Company

WESTLINKS I
12730 COMMONWEALTH DR. | FORT MYERS, FLORIDA



FOR LEASING INFORMATION CONTACT

MATT PRICE (239) 738-7884 | mprice@seagatedevelopmentgroup.com

Broker Participation Encouraged

PROPERTY HIGHLIGHTS

WAREHOUSE | DISTRIBUTION | OFFICE



50,000 Square Feet with
Units from 1,285 SF



Dock-High Doors and grade-level
loading



18 Foot Ceilings



Underground Utilities



Professionally Landscaped
and Maintained Grounds



Individual Tenant Signage



Office Build-Out Available

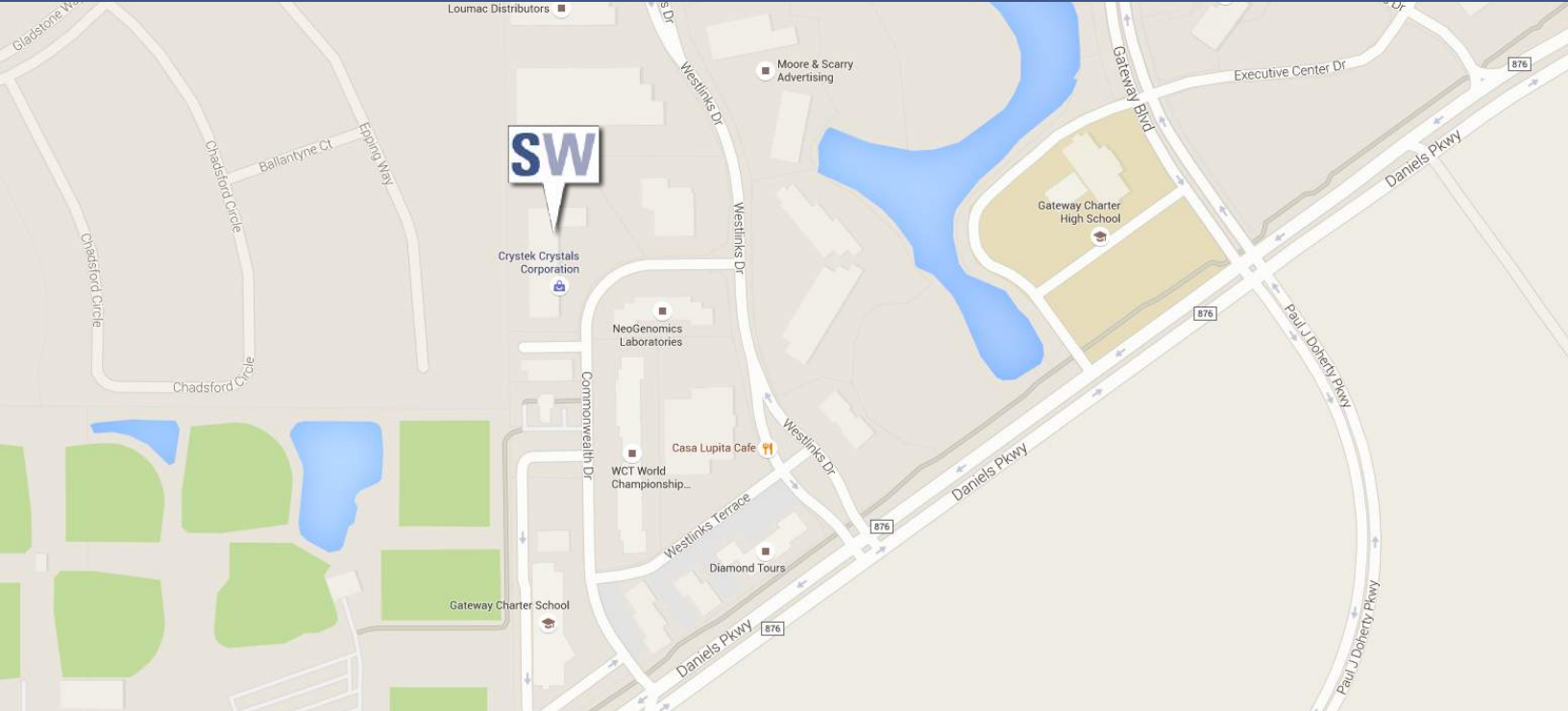


Broker Participation Encouraged

SW MANAGEMENT & REALTY

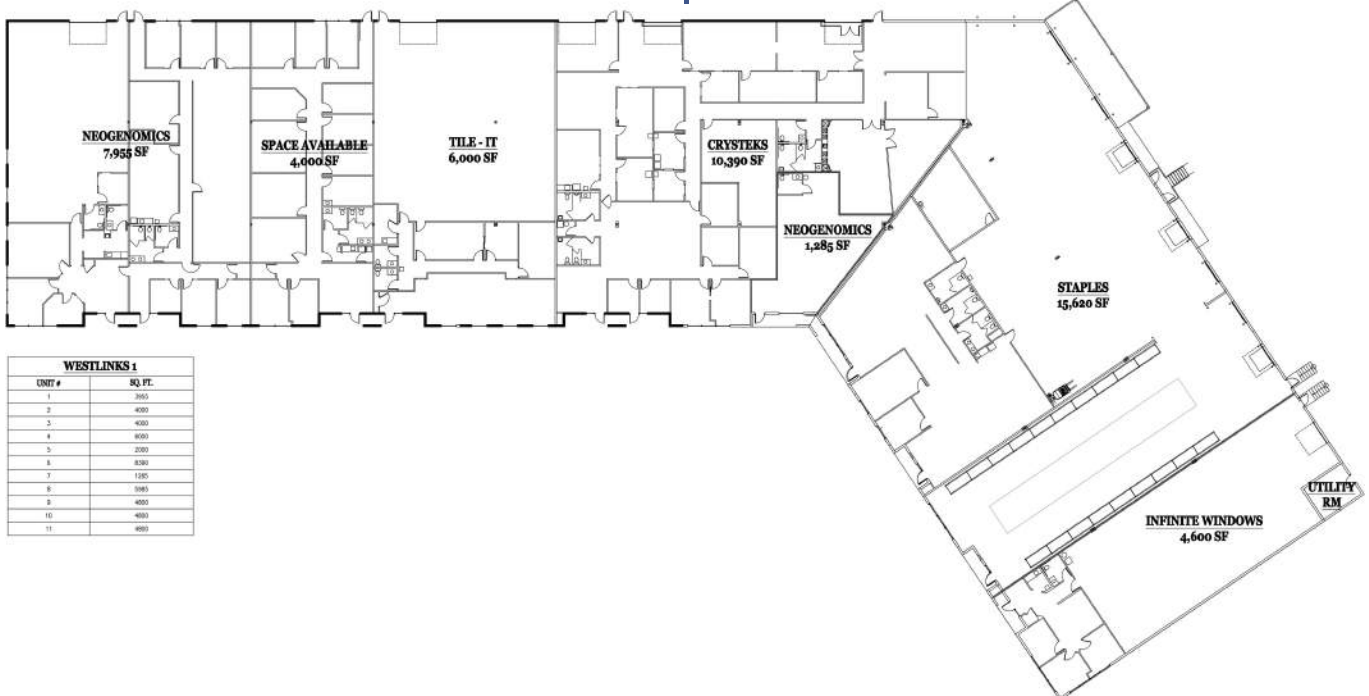
A Seagate Development Group Company

WESTLINKS I 12730 COMMONWEALTH DR. | FORT MYERS, FLORIDA



Westlinks I is located within Westlinks Business Park, a fourteen-building office and flex park Located off of Daniels Parkway in Fort Myers. Westlinks is also located within Gateway, a 3,000-acre master-planned community, and Within minutes to I-75, U.S. 41 and Southwest Florida International Airport.

FLOOR PLAN | WESTLINKS I



SW MANAGEMENT & REALTY

A Seagate Development Group Company

FLOOR PLAN | WESTLINKS I UNIT 4

