

Your Greatest Commercial Property Asset



SEAGATE

DEVELOPMENT GROUP

Concept to Creation... Experience Excellence



OVER ONE MILLION SQUARE FEET UNDER MANAGEMENT IN SOUTHWEST FLORIDA

SW MANAGEMENT & REALTY

A Seagate Development Group Company



Commercial & Residential
Development & Construction



Maintenance Services



Property Management



Leasing Services

CGC1523216

12801 COMMONWEALTH DRIVE, SUITE 12, FT. MYERS, FL 33913 | (239) 738-7900 | SEAGATEDEVELOPMENTGROUP.COM

SW MANAGEMENT & REALTY

A Seagate Development Group Company

WESTLINKS II
12771 WESTLINKS DRIVE | FORT MYERS, FLORIDA



FOR LEASING INFORMATION CONTACT

MATT PRICE (239) 738-7884 | mprice@seagatedevelopmentgroup.com

Broker Participation Encouraged

PROPERTY HIGHLIGHTS

WAREHOUSE | DISTRIBUTION | OFFICE



40, 000 SF Flex
Distribution Building



Dock-High Doors



18 Foot Ceilings



Underground Utilities



Professionally Landscaped
and maintained grounds



Approved for Office, Warehouse/
Distribution and Showroom uses



Office build-out available



Broker Participation Encouraged

SW MANAGEMENT & REALTY

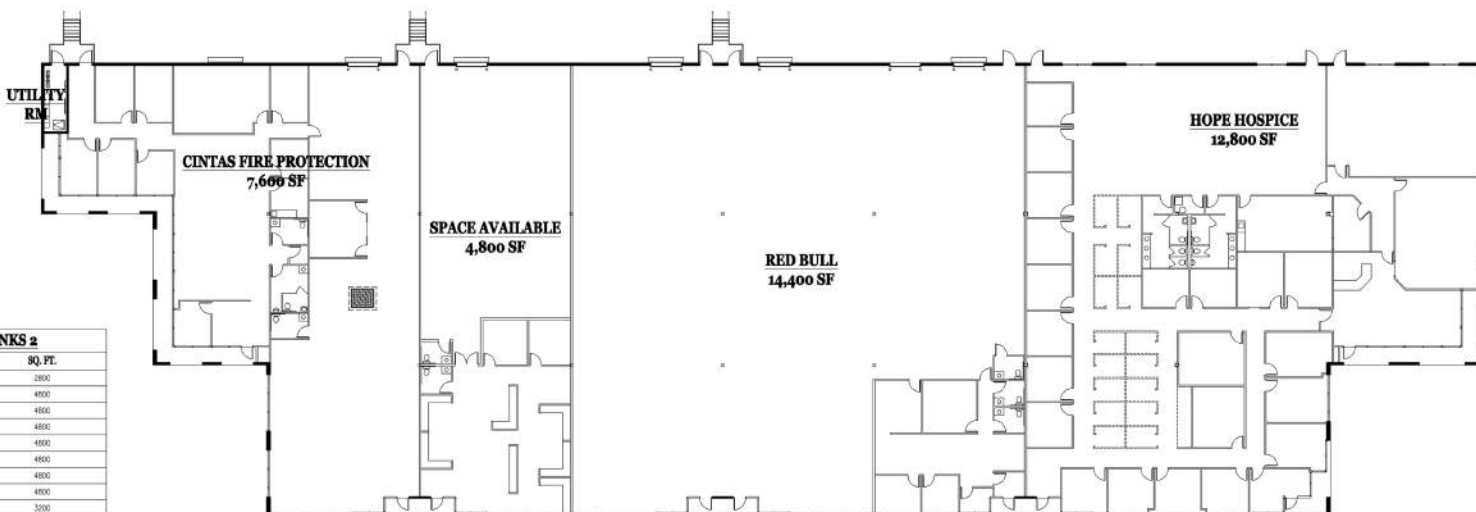
A Seagate Development Group Company

WESTLINKS II 12771 WESTLINKS DRIVE | FORT MYERS, FLORIDA



Westlinks II is located within Westlinks Business Park, a fourteen-building office and Flex Park located off of Daniels Parkway in Fort Myers. Westlinks is also located within Gateway, a 3,000-acre master-planned community and within minutes to I-75, US 41 and Southwest Florida International Airport.

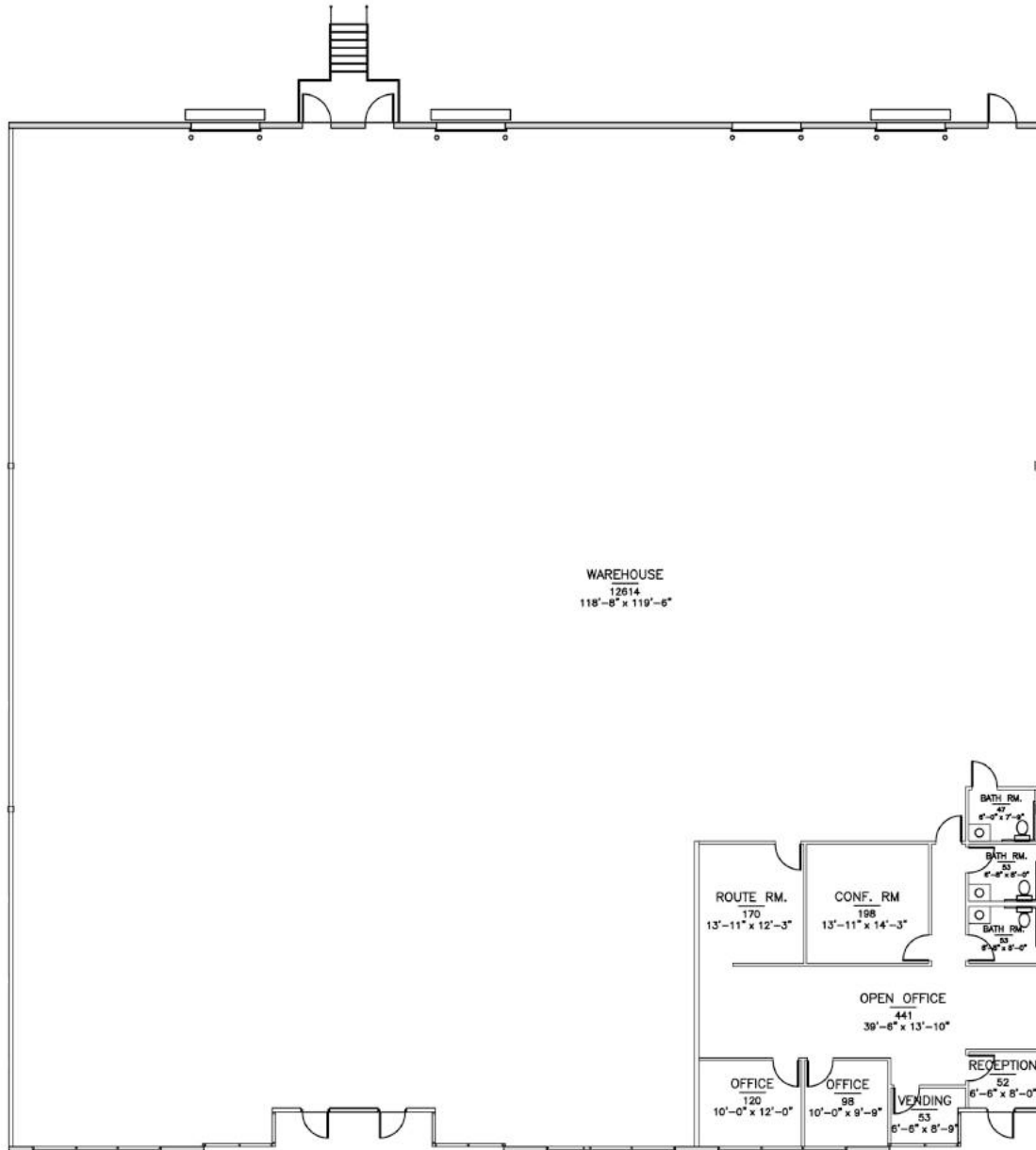
FLOOR PLAN | WESTLINKS II



SW MANAGEMENT & REALTY

A Seagate Development Group Company

FLOOR PLAN | WESTLINKS II



Westlinks II - Units 4-6
14,400 Sq. Ft.