



The Coronado Model



The Coronado encapsulates an exquisite example of the Pacific Palisades lifestyle. A mixture of sophistication and serenity, this open-concept, 4 bedrooms plus a flexible study, 4 full-baths and 1 half-bath, 3-car garage floor plan makes the perfect everyday getaway for your family.



Area Summary

Living A/C	2,796
2nd Floor A/C	1,516
Total A/C	4,312
Covered Entry	54
Garage	865
Covered Lanais	754
Grand Total	5,985

Dimensions

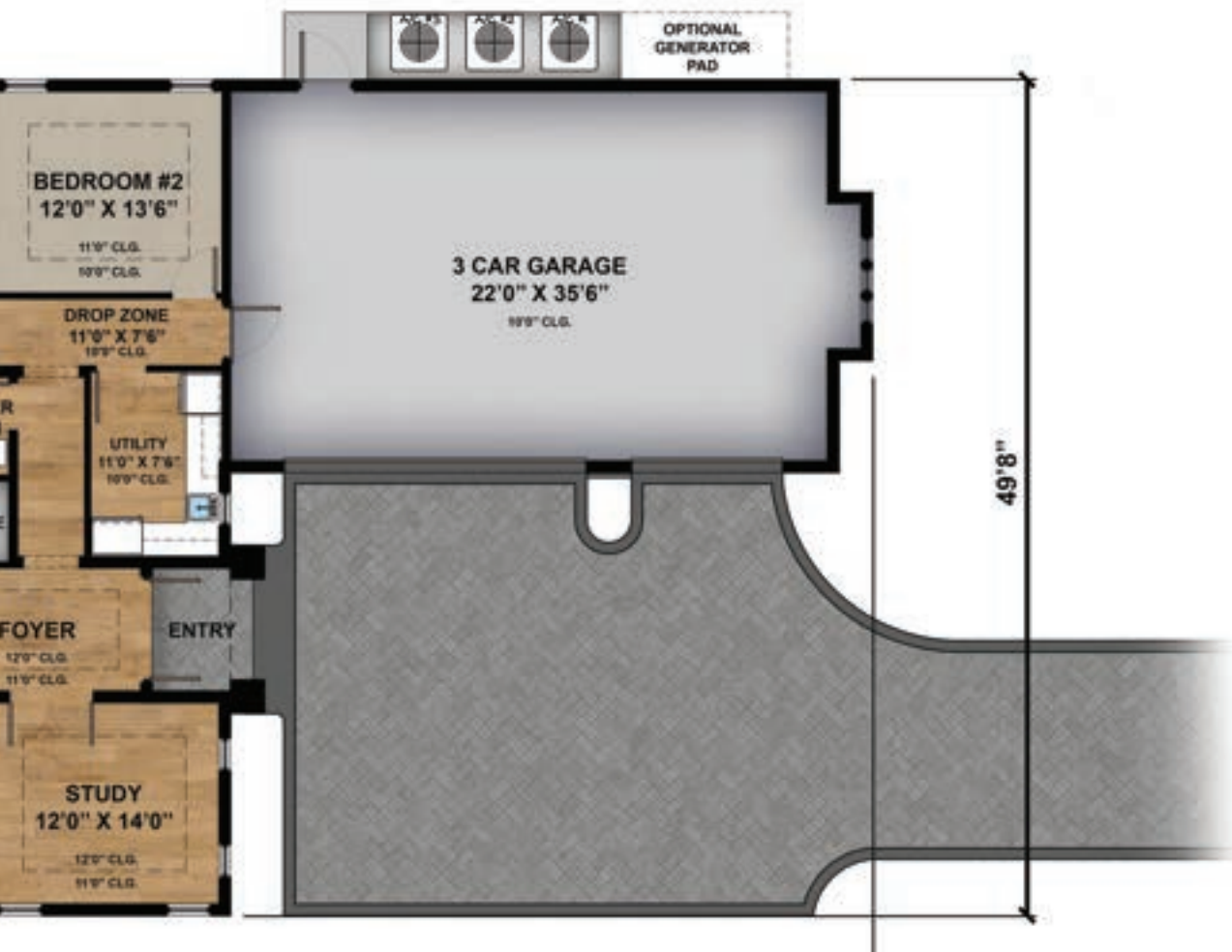
117' 9" x 49' 8"

Model Features

Elevation: Two Story
 Bedrooms: 4 Plus Study
 Baths: 4 Full | 1 Half
 Garage: 3 Car
 Designed By:
 JMDG Architecture



The Coronado Model



*Room sizes are subject to change. Optional features may be shown in artist renderings. 3/1/23