



## The Newport Model



Our Newport Model is truly a work of art. With over 4,400 square feet, this two-level floor plan is sure to be your family's safe harbor.

This open-concept layout features 4 bedrooms plus a flexible study, 4 full-baths, 1 half-bath, and a 3-car garage. Pacific Palisades – perfected.

The logo for Palisades, featuring a stylized wave graphic above the word "Palisades" in a serif font. Below it, in a smaller font, is the text "A Seagate Development Group Community".  
**Palisades**  
*A Seagate Development Group Community*



## Area Summary

Living A/C	2,867
2nd Floor A/C	1,570
<b>Total Living A/C</b>	<b>4,437</b>
Covered Entry	54
Garage	844
Covered Lanais	783
<b>Grand Total</b>	<b>6,122</b>

## Dimensions

115' 9" x 49' 8"

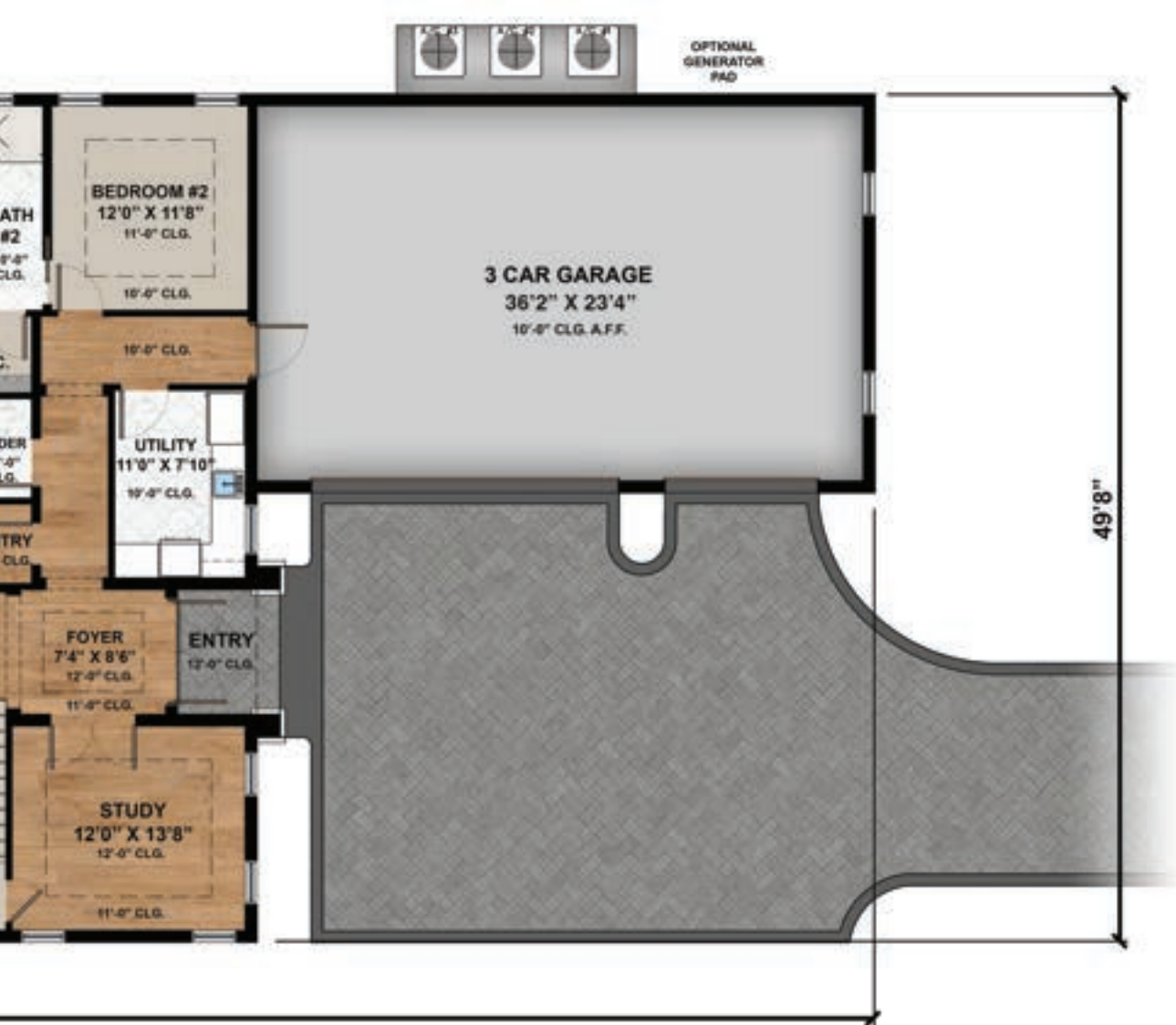
## Model Features

Elevation: Two Story  
 Bedrooms: 4 Plus Study  
 Baths: 4 Full | 1 Half  
 Garage: 3 Car  
 Designed By: JMDG Architecture



## The Newport Model





\*Room sizes are subject to change. Optional features may be shown in artist renderings. 3/1/23